



This two-storey Sorrento home has a grandstand view of the Indian Ocean.

# Stunner in a superb location

Owners love their light, bright home with ocean views. **Len Findlay** reports

There is an old theory among young men that pretty girls go out with not-so-pretty friends to make themselves seem more attractive.

The theory could apply to this home — it sits at the rear of a strata block and the front half is occupied by an old fibro home which has not yet been demolished and replaced yet.

However, it does not apply, for the two-storey home needs nothing to make it look better. It is a stunner in a superb location with sweeping Indian Ocean views.

From the entry with its short, curved staircase to the big upstairs living area with its views, the home has quality.

Big windows at the entrance, and a window wall looking out to the alfresco area with its outdoor kitchen and front garden, give the home a feeling of space and light, while being warm and welcoming.

The ground level has a big kitchen, dining room and living area, where there is a gas log fire which also heats the upstairs section through its flue. The dining area has a built-in display unit.

There is a bedroom with semi-ensuite, a large bathroom, toilet and vanity. As in the home's three bathrooms, the floor and wall tiles are of high standard.

Another bedroom and laundry are on this level and a small staircase leads down to the double garage, which is on the same level as the entrance, a few steps below the ground floor.



Upstairs via a wide staircase is the second living area, with panoramic ocean views.

There is a big master bedroom with ensuite and walk-in robes and the balcony can be entered from the living area or from the bedroom. Big windows in the bedroom mean the owners can wake to the Indian Ocean vista.

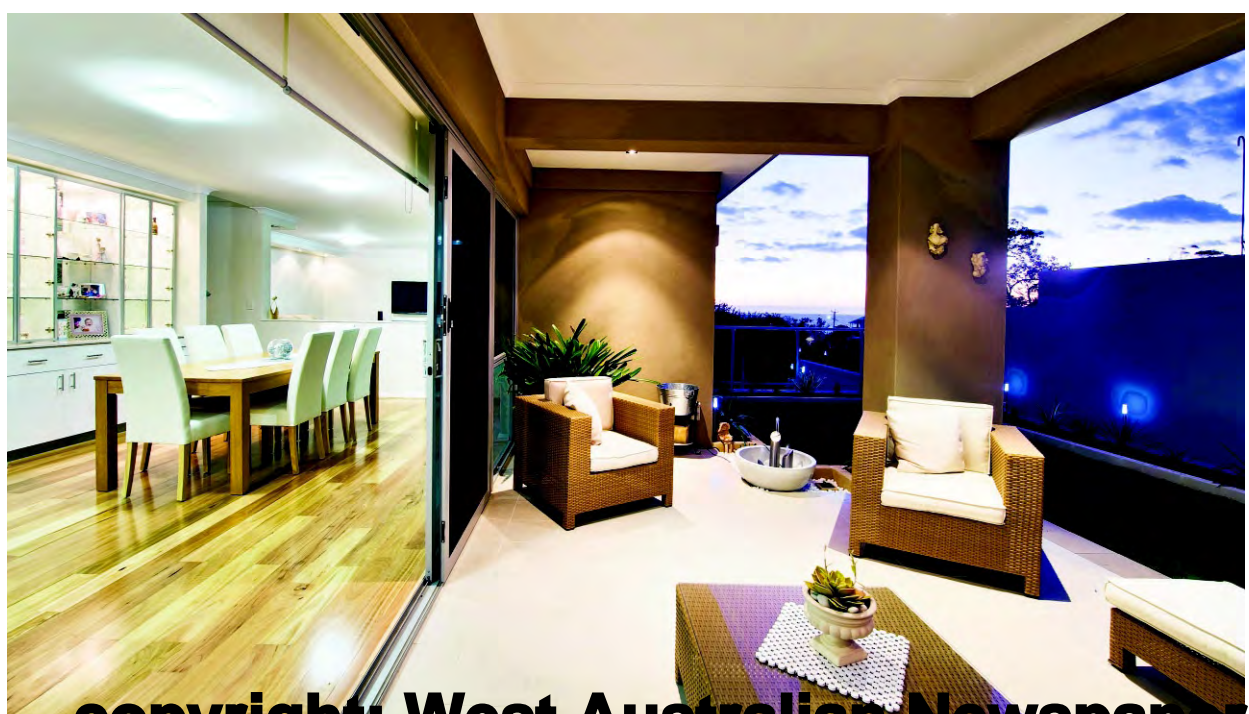
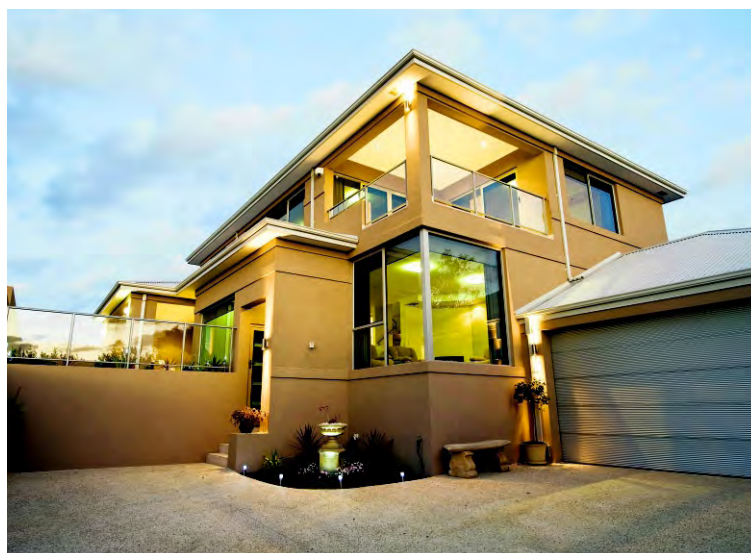
There is another bedroom and a full bathroom adjacent.

The home's finish is high quality, from the built-in display unit to the varying ceiling heights, to the remote entry system which has a built-in security camera at the main gate.

When Ron Mangano, co-owner of Devrite Constructions, was building the home, he paid a couple of visits at 2am. "It was those winter storms we had this year," he explained, "and I wanted to see for myself how everything was standing up; waterproofing and the like."

The owners are delighted with the results, and with Mr Mangano and designer Dean Bell.

For inquiries contact Devrite Constructions on 9362 5416.





# Fine views give extra to town house triple



## ROSS HAIG

All three town houses in this Carlisle development share a common asset — prime views to a big park and sporting reserve.

Harnessing the aspect, and making it integral to the town house pictured here, were among the challenges for designer Dean Bell when working with concepts for the narrow 338sqm block.

To escape any neutralising sense of uniformity in their elevations, each building has an individual and distinctive facade — in this instance, heightened by feature random-patterned limestone, steel channelling over the porch and a mini-orb sectional garage door.

Maximum benefit from northern winter sun and light is gained by extending the main passage 20m from entry to rear living and meals zone, with generous floor-level windows overlooking a low-maintenance courtyard garden lit by floor and wall lights for added nocturnal effect.

Selective use of shadow line cornices and bamboo flooring, together with stainless-steel

staircase rails and sidelights help to emphasise the home's sharp, contemporary lines.

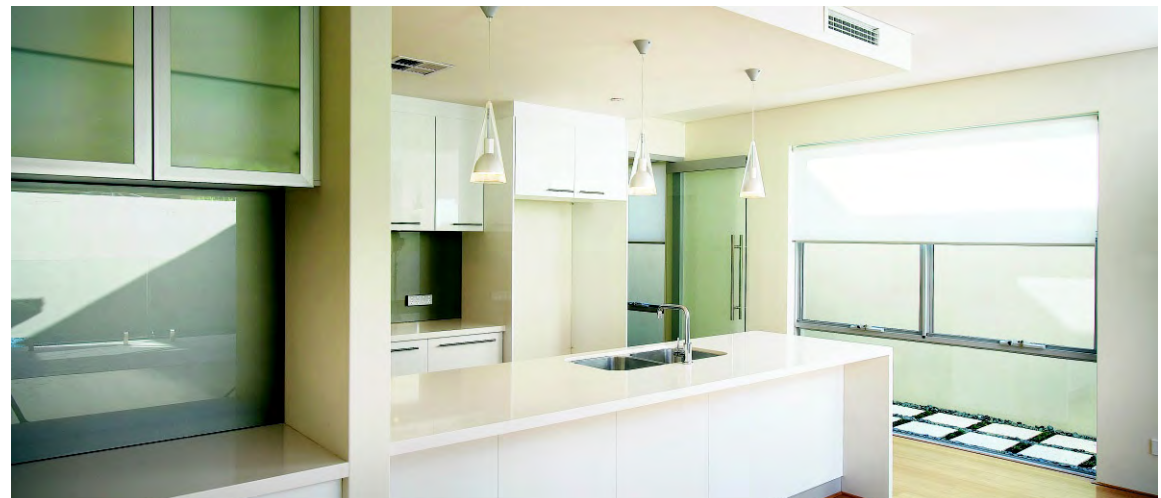
Of the three bedrooms upstairs, the main suite has a private balcony with a cedar ceiling, and a neatly hidden his-and-her walk-through robe with customised storage. The ensuite has full wall tiling, a double shower and twin vanity bowls.

A fourth bedroom at ground level intended for guest use has a two-way toilet.

Despite the block's limited size, the designer has successfully linked the living zone with the compact backyard, helped by a seven-section stacker door that opens cleanly to one side to provide extended indoor-outdoor entertaining space, and to provide easy access to a plunge pool.

The kitchen has an integrated dishwasher, high-gloss vinyl-wrap cupboards with stainless-steel handles and a twin-door pantry.

**The home was an entry in the 2009 HIA-NAB Perth Housing Awards. For inquiries, contact builder Devrite Constructions on 9362 5416.**



The kitchen has high-gloss vinyl-wrap cupboards, accentuating the contemporary styling of the home.