

# Designed to Switch inside-out



Switch eight 180

Brookleigh Estate, Caversham

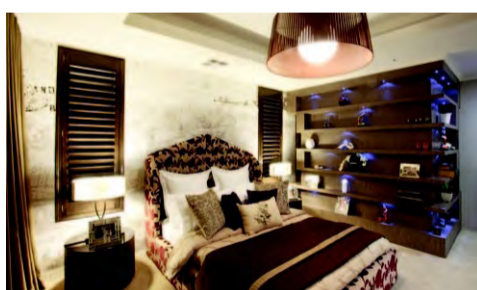
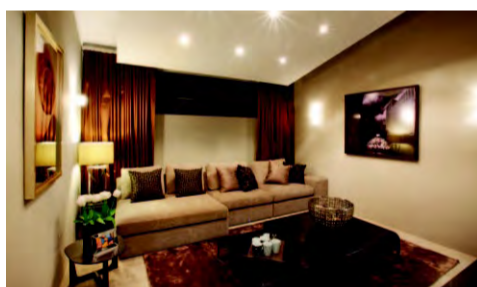
A luxurious family home that embraces modern lifestyles, Switch eight 180 features an open, flowing plan with many clever details. Its ability to be zoned makes it a true indoor-outdoor home that can be opened up for easy entertaining.

## As you grow so should your home

Switch Homes' floor plans are designed to be flexible and adjust to your growing needs whatever your budget. Switch builds high-quality, unique homes for living from \$177,000.

## Switch Extras

Switch takes that extra step to help you complete your home with a range of premium inclusions and Home Completion Packages.



The kitchen was designed to have a clean, modern look.

# Design evolves from wish list

## MAYA ANDERSON

Taking a different approach to design has paid off with this beautiful Carlisle home.

Designed and built by Devrite Homes of Distinction, it won the Contract Homes \$350,000-\$400,000 category at the MBA 2011 Housing Excellence Awards.

Director Ron Mangano said the company specialised in building individually designed homes.

"Rather than giving the standard builder's brief, Devrite clients are asked to consider a wish list and they then spend time with our designer," he said.

Mr Mangano said the home was built on a 370sqm block that was extremely narrow and had three double-size bedrooms and two bathrooms.

The home is a culmination of many subtle design features which all come together to give it an air of elegance with practicality, starting with the aluminium-framed entrance. Opening on to an extra-wide passageway filled with natural light via a bank of large awning windows, the entrance sets the spacious feel for the rest of the home with its abundance of natural light and high ceilings. Highly polished timber floorboards add warmth and depth.

Mr Mangano said the entrance to the heart of the



home — the open-plan kitchen, dining and living area — was designed to be a feature in itself.

The spacious open-plan living area has bi-fold doors that open on to a covered alfresco area with a raised ceiling.

The kitchen was designed to have a clean, modern look with a mixture of stone and stainless-steel benchtops teamed with a large mirrored glass splashback. High-gloss porcelain tiles to the living area sit perfectly against the lustre achieved by the low-sheen wall paint.

The bedrooms have large mirrored doors to the robes and lush pile carpet.

The ensuite, family bathroom and powder room have been finished in a palette of neutrals and have stone benchtops to the vanities.



Custom Built Home \$350,001-\$475,000

SUBURB: Carlisle  
BUILDER: Devrite Homes of Distinction  
PHONE: 9361 1131

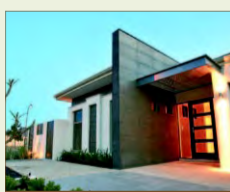


Switch Homes for Living

Visit our award-winning Display Homes this weekend.



Switch eight 30  
Settlers Hills, Baldivis.



Switch eight 60  
Belvedere Estate, Wanneroo.



Switch eight 70  
The Vale Estate, Aveley.



Switch eight 80  
Vertu Estate, Harrisdale.



Switch eight 90  
Lakelands Private Estate, Lakelands.



Switch eight 100  
Emerald Park, Wellard.

T: (08) 9463 7111 E: Living@SwitchHomes.com.au 'Building throughout the South-West'

www.SwitchHomes.com.au



A PINDAN Partnership